

ITEM H

**WEST TRAVIS COUNTY PUBLIC UTILITY AGENCY (“WTCPUA”)
WATER AND SEWER SERVICE AND DEVELOPMENT POLICIES**

June 19, 2014

Amended January 21, 2021

Amended April 18, 2024

Amended April 17, 2025

A. Water Service and Development Policies

- 1. Existing Commitments.** Honor water service commitments in existing wholesale and retail water service contracts and agreements.
- 2. Wholesale Service.** No new wholesale service (i.e., WTCPUA will provide only retail water service) in the WTCPUA’s “Water Service Area.”¹
- 3. Standard Service.** Provide Standard Water Service upon application from a person or entity with an existing service agreement with the WTCPUA or located within WTCPUA Water certificate of convenience and necessity (“CCN”) No. 13207, in accordance with WTCPUA Schedule for Rates, Charges, and Terms and Conditions of Water and Wastewater Services.
- 4. Planning Service Level/Service Level A.** Apply a base level of service for planning purposes throughout the Water Service Area¹ that is consistent with the WTCPUA’s Land Use Assumptions and Capital Improvements Plan. This base level of service shall be defined as “Service Level A” and shall be no greater than one (1) living unit equivalent (“LUE”) per acre “Gross Site Area”².
- 5. Approval by General Manager.** The General Manager may approve or deny any Service Availability Letter (“SAL”) and/or any Non-Standard Service Agreement (“NSSA”) for 20 LUEs or less of service capacity for applicants for Non-Standard Water Service. All other applications for service or NSSAs shall be presented to the Board for approval or denial.
- 6. General Requirements for New Non-Standard Service.** For applicants for Non-Standard Water Service that are in the Water Service Area and do not have an existing service agreement with the WTCPUA, the Board may consider extension of service under the following conditions:

¹ “Water Service Area” shall mean and include (1) the area that is within WTCPUA’s water CCN No. 13207, as of September 26, 2013, and (2) the area that can be served by the WTCPUA’s Water Transmission System, as constructed on September 26, 2013 (regardless of whether such area is within the boundaries of water CCN No. 13207), without the need to construct additional central facilities other than those identified in the WTCPUA’s Water Capital Improvements Plan; and Water Service Area is more particularly depicted in Attachment 1, attached hereto and incorporated herein for all purposes.

² “Gross Site Area” means the total amount of acreage in a development. “Net Site Area” means the difference obtained by subtracting the Development’s Gross Site Area minus the area located within undisturbed native vegetative buffers and sensitive environmental features as described in the September 1, 2000 USFWS Recommendations.

- a. Applicant submits a conceptual site plan or preliminary plat/final plat/legal lot determination for review and approval by the WTCPUA demonstrating compliance with the appropriate Service Level as established by these Policies.
- b. Annual non-reimbursable payment of Water Reservation Fees for unused LUEs, as follows:
 - i. The initial, annual non-reimbursable Water Reservation Fees for any unset water services (i.e., LUEs) shall be due and payable within 6 months of the effective date for the WTCPUA's written service commitment;
 - ii. Subsequent annual non-reimbursable Water Reservation Fees for any unset water services shall be due and payable upon each annual anniversary date of the WTCPUA's written service commitment; and
 - iii. The Non-Standard Service Agreement may be terminated if any reservation fees are not paid for all or any portion of the unset LUEs.
- c. Pre-Payment of 100% of impact fees for each development phase upfront if required to fund construction of capital improvements needed to provide service and required by the WTCPUA in its sole discretion.
- d. Payment or funding of capital projects needed to serve the project that are not included in the WTCPUA approved Capital Improvements Plan upfront or provision of a financial guarantee for such funds in a form acceptable to the WTCPUA.
- e. Phase water demands of the project in unison with WTCPUA approved Capital Improvements Plan.
- f. Project has no substantive impacts to its approved Capital Improvements Plan, including no impact to the calculation of impact fees as determined by the WTCPUA.
- g. Project has no substantive impact to rates to current customers from extending service to the project as determined by the WTCPUA.
- h. Project has no substantive impacts to system operations as determined by the WTCPUA.
- i. Provide water service, following the 75% - 90% Guideline,³ to the extent existing capacity is available.

³ When a WTCPUA central facility reaches 75% of rated or design capacity, the WTCPUA will commence planning and design of needed central facility improvements to expand such facility and when a WTCPUA central facility reaches 90% of rated or design capacity, the WTCPUA will commence construction of needed central facility improvement.

- j. Impact fees shall be assessed at the current adopted rate of the PUA as may be amended from time to time.

7. Service Level Determination. Service levels for a new project in the Water Service Area will be determined as follows:

- a. Applicants for Non-Standard Water Service who (i) are located outside of the corporate limits and extra-territorial jurisdiction (“ETJ”) of the City of Bee Cave (as such ETJ boundaries exist on January 9, 2014); (ii) who are located outside of the City of Dripping Springs corporate limits; and (iii) who do not have an existing service agreement with the WTCPUA will be required, as a matter of policy, to adopt one of the alternative water quality measures required of new development as specified in that certain “Memorandum of Understanding” between LCRA and the United States Fish and Wildlife Service (the “USFWS”), dated May 24, 2000 (the “MOU”) and the “Settlement Agreement and Stipulation of Dismissal” from the lawsuit, Hays County Water Planning Partnership, et al. vs. Lt. General Robert B. Flowers, U.S. Army Corps of Engineers, Thomas E. White, Secretary of the Army, Cale Norton, Secretary of the Department of the Interior, and Lower Colorado River Authority, W.D. Tex. 2002 (No. AOOCA 826SS) (the “Settlement Agreement”) to establish the service capacity level including:
- U.S. Fish and Wildlife Service Recommendations for Protection of Water Quality of the Edwards Aquifer dated September 1, 2000 (“2000 USFWS Recommendations”);
 - TCEQ optional enhanced measures, Appendix A and Appendix B to RG-348 (“OEM”); or
 - Alternative water quality measures approved by USFWS through separate independent consultation.

For the purposes of this Policy, Service Level A is equivalent to the 2000 USFWS Recommendations. Service exceeding Service Level A, to be defined as “Service Level B,” is that service level that may be obtained for a project by compliance with OEM or separate USFWS consultation/approval.

- b. The Board may consider a commitment to Service Level B for projects greater than five acres Gross Site Area if the following additional conditions are met (in addition to the General Requirements of Paragraph 6 above):
- i. Applicant submits a conceptual site plan or preliminary plat or final plat/legal lot determination and construction plans for PUA review and approval demonstrating compliance with one of the three alternative measures outlined above.
 - ii. Applicant provides the WTCPUA with written confirmation of TCEQ OEM compliance (Engineer’s Design Certification) for the project and obtain approval by an independent third-party engineer (retained by the WTCPUA

and to be paid for by the Applicant for each development phase prior to construction of each respective project phase and Non-Standard Service Agreement may be terminated if approval not obtained within a reasonable time.

- iii. Applicant provides the WTCPUA with written certification of OEM compliance (Engineer's Certification of Acceptance and Completion) after obtaining approval by an independent third party engineer (retained by the WTCPUA and to be paid for by the Applicant) for post construction.
 - iv. The Board may consider a commitment to Service Level B for projects equal to or less than five acres Gross Site Area if Applicant submits a conceptual site plan, preliminary plat or final plat/legal lot determination and construction plans demonstrating compliance of the project with the OEM. The WTCPUA Engineer shall review the plat or construction plans for OEM compliance.
- c. Applicants for Non-Standard water service who (i) are located inside the corporate limits or ETJ City of Bee Cave (as such ETJ boundaries exist on January 9, 2014) and (ii) who do not have an existing service agreement with the WTCPUA will be required, as a matter of policy, to follow water quality protection measures in compliance with City of Bee Cave water quality requirements. Any applicant requesting non-standard water service for a project in the City of Bee Cave corporate limits or ETJ shall have service levels approved by the WTCPUA and determined in consideration of City of Bee Cave water quality, zoning, platting and site plan requirements.
 - d. Applicants for Non-Standard water service who (i) are located inside the corporate limits of the City of Dripping Springs and (ii) who do not have an existing service agreement with the WTCPUA will be required, as a matter of policy, to follow water quality protection measures in compliance with City of Dripping Springs water quality requirements. Any applicant requesting non-standard water service for a project in the City of Dripping Springs corporate limits shall have service levels approved by the WTCPUA and determined in consideration of City of Dripping Springs water quality, zoning, platting and site plan requirements.
- 8. Expand Uplands Regional Water Treatment Plant (within its current footprint) and Lake Austin Raw Water Intake and Raw Water Transmission System to the maximum day capacity of 33 mgd.
 - 9. Obtain additional LCRA Contract Raw Water, as necessary, to match maximum Uplands Regional Water Treatment Plant capacity.
 - 10. Commence investigating supplemental alternative water supplies of no more than 7.5 mgd maximum capacity, including but not limited to:

- a. In cooperation with Hays County entities, investigate groundwater importation alternatives.
 - b. Purchase wholesale water from the City of Austin and/or other entities.
- 11. Plan and estimate capital improvements necessary to provide water service at “build-out” level within the Water Service Area.
- 12. Negotiate memorandums of understanding/interlocal agreements with the cities of Austin, Bee Cave, and Dripping Springs, and Travis and Hays Counties, for coordinating the site review and approval processes, and for conducting plumbing inspections.
- 13. Wholesale water customers requesting to increase their maximum annual quantity, maximum peak day use, and/or max day reservation (as such terms are defined in the relevant wholesale agreement) shall be required to demonstrate that their current retail distribution systems are adequately sized or will be expanded (with sufficient engineering design and financing plans) to accommodate the additional flow. WTCPUA will meet TCEQ minimum requirements for delivery of water at the master meter, and wholesale customers shall be responsible for providing adequate storage within its retail system to meet the service needs of its individual retail customers.
- 14. Wholesale water customers requesting to amend their existing contract must agree to:
 - a. Allow the WTCPUA to set meters and collect impact fees;
 - b. Remit impact fees before additional water is supplied;
 - c. Penalties for missed or late payments as allowed under applicable law;
 - d. Sole source provisions; and
 - e. Recognition that retail customers will not subsidize wholesale customers

e. 15. Applicants for Non-Standard water service shall confirm the method and amount of wastewater service planned for the project that is consistent with its application for water service from the WTCPUA and such confirmation shall be approved by the WTCPUA as a condition of the commencement of water service.

B. Sewer Service and Development Policies

- 1. WTCPUA planning for maximum sewer treatment and treated effluent disposal shall not exceed 1.8 mgd.
- 11. Do not provide retail or wholesale sewer service outside of “Sewer Service Area”⁴
- 12. Developer to install and maintain sewage treatment facilities for property located outside of Sewer Service Area.

⁴ “Sewer Service Area” shall mean and include the area that can be served by the WTCPUA’s wastewater system, as constructed on September 26, 2013 without the need to construct additional central facilities except those included in

the WTCPUA's Wastewater Capital Improvements Plan; and such area is more particularly depicted in Attachment 3, attached hereto and incorporated herein for all purposes.

4. For applicants for Non-Standard Sewer Service within WTCPUA Sewer Service Area:

- a. Require annual non-reimbursable payment of Wastewater Reservation Fees for unset LUEs, as follows:
 - i. The initial, annual non-reimbursable Wastewater Reservation Fees for any unset wastewater services (i.e., LUEs) shall be due and payable within 6 months of the effective date for the WTCPUA's written service commitment; and
 - ii. Subsequent annual non-reimbursable Wastewater Reservation Fees for any unset wastewater services shall be due and payable upon each annual anniversary date of the WTCPUA's written service commitment; and
 - iii. The Non-Standard Service Agreement may be terminated if any reservation fees are not paid for all or any portion of the LUEs.
- a. Consider providing retail sewer service, if feasible and if in the best interests of the WTCPUA as determined by the WTCPUA in its sole discretion, and:
 - i. Prepayment of 100% of impact fees for each development phase upfront if required to fund construction of capital improvements needed to provide service and required by the WTCPUA in its sole discretion.
 - ii. Payment or funding of capital projects needed to serve the project that are not included in the WTCPUA approved Capital Improvements Plan upfront or provision of a financial guarantee for such funds in a form acceptable to the WTCPUA.
 - iii. Provide sewer service, following the 75% - 90% Requirement described in TCEQ Texas Land Application Permit No. WQ0013594-001, to the extent existing capacity is available.

5. The General Manager may approve or deny any SAL and/or any NSSA for 20 LUEs or less of service capacity for applicants for Non-Standard Wastewater Service. All other applications for service or NSSAs shall be presented to the Board for approval or denial.

6. Negotiate memorandums of understanding/interlocal agreements with the cities of Austin and Bee Cave, and Travis County, for coordinating the site review and approval processes, and for conducting plumbing inspections.

VII. STAFF REPORTS

ITEM A



General Manager's Report

April 17, 2025

Updates:

PUA moved to Stage 2 Watering Restrictions on February 20, 2025. All customers were notified and we have sent reminder notices and posted updates on our website and Facebook page.

We have sent 60 1st Violation warning letters to date. PUA employees are volunteering for water patrol and we are averaging about 20 hours/week patrolling our service area.

Current lake conditions as of April 10th:

- Combined storage is about 970,130 acre-feet. Storage must fall below 750,000 acre-feet (or 37.5% combined capacity) to trigger Stage 3 restrictions.
- Lake Travis is 43% full.

AMI Meters:

- 3,517 meters have been installed on the Hwy 71 system (70% of total).
- 100% of meters are transmitting.
- Anticipate completion of the 71 system by the end of April.

January Customer Disconnects:

134 delinquent notices were mailed to **Hwy. 290 customers** on 3/6/25.

- **23** accounts were disconnected on 3/26/25.

141 delinquent notices were mailed to **Hwy. 71 customers** on 2/21/25.

- **20** accounts were disconnected on 3/12/25.

Personnel Update:

We are excited to announce that we have hired an HR Manager, Ashlan LaBarge.

We currently have 1 vacancy for a night shift water operator and 1 Line Maintenance technician.

ITEM B



Operations Report

April 2025

Water/Wastewater Department Update

Water Process Summary: February 2025

Water Treatment Plant	Actual
AVG Raw Water	7.290 MGD
AVG Treated	7.273 MGD
Peak Treated	8.718 MGD
AVG CFE Turbidity	0.05 NTU
AVG Chlorine	3.32 mg/L

Water Process Summary: March 2025

Water Treatment Plant	Actual
AVG Raw Water	10.038 MGD
AVG Treated	10.209 MGD
Peak Treated	12.116 MGD
AVG CFE Turbidity	0.06 NTU
AVG Chlorine	3.22 mg/L

Wastewater Process Summary: February 2025

Lake Point WWTP	Actual	Permit Limit
AVG Flow	0.424 MGD	0.675 MGD
MAX Flow	0.581 MGD	
AVG CBOD	2.40 mg/l	5 mg/l
AVG Fec.Coli	24 mg/l	20 mg/L
AVG NH3	0.58 mg/l	2 mg/L
AVG Turbidity	1.75	3
AVG TSS	0.91 mg/L	
Bohls WWTP	Actual	Permit Limit
AVG Flow	0.290 MGD	0.325 MGD
MAX Flow	0.449 MGD	
AVG CBOD	1.35 mg/l	5 mg/L

AVG Fec.Coli	1.70 mg/l	20 mg/L
AVG NH3	0.19 mg/l	2 mg/L
AVG Turbidity	1.04	3
AVG TSS	0.92 mg/L	

Wastewater Process Summary: March 2025

Lake Point WWTP	Actual	Permit Limit
AVG Flow	0.429 MGD	0.675 MGD
MAX Flow	0.566 MGD	
AVG CBOD	1.66 mg/l	5 mg/l
AVG Fec.Coli	1.10 mg/l	20 mg/L
AVG NH3	0.08 mg/l	2 mg/L
AVG Turbidity	1.4	3
AVG TSS	0.9 mg/L	

Bohls WWTP	Actual	Permit Limit
AVG Flow	0.270 MGD	0.325 MGD
MAX Flow	0.512 MGD	
AVG CBOD	1.50 mg/l	5 mg/L
AVG Fec.Coli	1.00 mg/l	20 mg/L
AVG NH3	0.16 mg/l	2 mg/L
AVG Turbidity	1.20	3
AVG TSS	1.43 mg/L	

Electromechanical Department Update

Water Treatment Plant

- Replaced Air scour valves on Unit #2.
- Route HSP #6 DO controls from decommissioned PLC cabinet to Chemical Building PLC cabinet.
 - Conduit and wire have been installed; integration is in process.

Raw Water Intake

- Pulled modules from VFD #5 to start PM of VFD.
 - Modules have undergone reconditioning and have been installed into the VFD.
 - Waiting on Schedule from Toshiba on field portion of PM.

Pump Station #1

- Generator project: Started 1st week of March.
 - Inspection performed on rebar, conduit, and vault on 4-8-25(minor corrections to be completed 4-9-25). Concrete is scheduled to be poured on 4-10-25.
- Installed new CL2 monitoring device.

Pump Station #2

- Replaced seal on GST valve.
- Working with contractor to repair minor leak on GST #3.

-
- Replaced fuse on Pump #1 due to power issues.
 - Performed PM on ATS.
 - Installed check valves on Generator fuel line.

Pump Station #3

- Pump #2 is lacking capacity; the replacement pump has been ordered.

Pump Station #4

- Replaced electrical feeder from main building to EST due to damage from water line installation.
- GST #1 repair is scheduled to start the week of April 14th.

Pump Station #5

- Corrected GST level transmitter scaling issue.

Pump Station #7

- Replaced GST level transmitters feeding the 1340 PS.
- Repair made to gate control panel.

Lake Pointe WWTP

- Repaired support to clarifier sweeps on Plant #1.
- Repaired RAS air lift pump on Plant #1.

Bohls WWTP

- Replaced filter media on both filters.
- A replacement irrigation pump has been ordered.
 - The new pump has been installed.
- Installation of additional controls to the irrigation skid are in process.
- Replaced phase monitor on Influent Pump #4.

Lift Station #1

- Performed annual, bi-annual and quarterly PM.

Lift Station #2

- Performed annual, bi-annual and quarterly PM.

Lift Station #3

- Performed annual, bi-annual and quarterly PM.

Lift Station #4

- Performed annual, bi-annual and quarterly PM.
- Replaced gaskets on Pumps 2 & 3.

Lift Station #5

- Replaced level transmitter.
- Performed annual, bi-annual and quarterly PM.

Lift Station #11

- Cleared debris from pumps.

Line Maintenance Department

New Water Taps/ Connections

- 9009 Madrone Ranch Trail- Pending

Leak Repairs

- 6" tape saddle and ¾" tap leaking on 6" main, West side of 71 & 2244
- Replace 6" valve @ Lake Pointe WWTP
- Repair dead end auto flush valve in the creaks of driftwood
- Replace 6" valves & 4" valve at LPWWTP
- Repair 4" air diffuser on Tank#1
- Replace 8" Wholesale Meter @ Sweetwater
- 11901 Yaupon Holly Lane- 2" Sewer Leak
- 11705 Yaupon Holly Lane – 1 ¼" Sewer Leak
- 6" main break @ 1302 Crystal Creek Dr
- 11300 Musket Rim, Service Line Repair

Hydrants

- 18690 Madrone Vista, replace hydrant
- Repair hydrant at Bee Cave Park
- Repair hydrant, 3501 Avendale Dr.

Manholes

- Raise manhole at 12118 Carlsbad Dr.

Shutouts/Walk Thru

- 1175 Water line phase 1 complete
- Test shut out on 6" main on west side of 71/2244

Misc- Projects

- Rim Rock Trail project- complete
- Help WW operator with replacing over 200 clean out caps- in progress
- Lake Pointe WWTP walkway project
- Repair fence at County Line and replace locks after break in
- Clean tire marks off driveway at 5112 Avispa Way

Future Projects

- Replace Wholesale Meter per Eddie
- Start manhole survey for Spanish Oaks

Meter Tech Department

Completed Service Orders Report March 2025

Meter Technician Service Orders		
Business Days	Month and Year	Total Completed
21	Mar-25	334
Job Code	Job Type	Quantity
1	Connect - activate water service for new account	42
2	Occupant Change - starting read for new occupant	72
3	Disconnect - final read and turn off water service	10
5	Cutoff - delinquent account, turn off and lock service	24
7	Reinstate - activate water service for delinquent account	31
8	Service Action - replacement or installs	0
9	Miscellaneous	1
11	Disconnect for Non-Payment	0
12	Disconnect for other utility for Waste Water non-payment	0
126	Check Status of Lockout	0
132	Tag door vacant with usage	1
135	Verify Serial Number and Read Transmission	2
149	Vacant or Stuck Meter	0
303	Fire Hydrant Meter Leaking	2
309	Relocate Fire Hydrant Meter	0
400	Install Meter	28
405	Install Fire Hydrant Meter	2
408	Pull Fire Hydrant Meter Final	1
413	CSI Final Inspection	17
414	Yardline Inspection	9
440	Replace Fire Hydrant Meter	0
450	Replace Encoder Module	0
501	Check for Water Leak	19
505	Perform Accuracy Test	0
601	Locate Meter and Mark Location	0
613	Replace Meter	6
625	Register Replacement	51
627	Replace XTR Transmitter	1
1417	No Water	1
1418	Low Pressure	6
1420	High Pressure	3
5000	Data Log - Prepare Records Per Client	5

District 71 total reads = 5,055

District 290 total reads = 5,322

District 71 rereads = 58

District 290 rereads = 69

Rereads: An excel list to check for stuck meters, leaks, or verify the transmitted read.

Wholesale total reads = 60

Operations Staff

Water Dept

- 1 open position – Night shift Operator

Electromechanical Dept

- 1 open position – Journeyman Electrician

ITEM C

West Travis County Public Utility Agency

2025 March

Governmental Funds Balance Sheet

	General Fund	Rate Stabilization Fund	Facilities Fund	Combined General Fund	Debt Service Fund	Capital Projects Fund	Impact Fee Fund	Total Governmental Funds
Assets								
Cash & Cash Equivalents	547,531	2,033,335	1,583,387	4,164,253	14,580,800	23,643,647	10,991,749	53,380,449
Investments	29,798,983	3,449,847	6,631,127	39,879,957	14,332,139	27,956,028	32,887,405	115,055,529
Receivables	3,850,206	-	-	3,850,206	-	-	-	3,850,206
Prepaid Expense	28,500	-	-	28,500	-	-	-	28,500
Deposits	16,087	-	-	16,087	-	87,561	-	103,648
Inventory	353,234	-	-	353,234	-	-	-	353,234
Total Assets	34,594,541	5,483,182	8,214,514	48,292,237	28,912,939	51,687,236	43,879,154	172,771,566
Liabilities								
Accounts Payable	890,588	-	665,639	1,556,227	-	484,947	-	2,041,174
Refundable Deposits	2,349,019	-	-	2,349,019	-	-	-	2,349,019
Unearned Revenue	4,036,022	-	-	4,036,022	-	-	-	4,036,022
Other Accrued Liabilities	903,451	-	-	903,451	-	-	-	903,451
Total Liabilities	8,179,080	-	665,639	8,844,719	-	484,947	-	9,329,666
Fund Balances								
Total Beginning Fund Balances	30,126,462	5,420,378	8,083,548	43,630,388	25,690,956	51,614,132	41,390,258	162,325,734
Revenues Over (Under) Expenditures	(3,711,001)	62,804	(534,673)	(4,182,870)	3,221,983	(411,843)	2,488,896	1,116,166
Fund Balances	26,415,461	5,483,182	7,548,875	39,447,518	28,912,939	51,202,289	43,879,154	163,441,900
Nonspendable-Prepaid Items	28,500	-	-	28,500	-	-	-	28,500
Restricted	-	-	-	-	28,912,939	51,202,289	-	80,115,228
Committed	-	5,483,182	7,548,875	13,032,057	-	-	-	13,032,057
Assigned	-	-	-	-	-	-	43,879,154	43,879,154
Unassigned	26,386,961	-	-	26,386,961	-	-	-	26,386,961
Total Ending Fund Balances	26,415,461	5,483,182	7,548,875	39,447,518	28,912,939	51,202,289	43,879,154	163,441,900
Total Liabilities and Fund Balances	34,594,541	5,483,182	8,214,514	48,292,237	28,912,939	51,687,236	43,879,154	172,771,566

West Travis County Public Utility Agency

2025 March

Governmental Fund Revenues, Expenditures, and Changes in Fund Balances

	General Fund	Rate Stabilization Fund	Facilities Fund	Combined General Fund	Debt Service Fund	Capital Projects Fund	Impact Fund	Total Governmental Funds
Revenues								
Program Revenues								
Water Revenue	11,923,038	-	-	11,923,038	-	-	2,892,133	14,815,171
Wastewater Revenue	2,649,255	-	-	2,649,255	-	-	62,300	2,711,555
SER Project Revenue	614,343	-	-	614,343	-	-	-	614,343
Total Program Revenues	15,186,636	-	-	15,186,636	-	-	2,954,433	18,141,069
Intergovernmental Revenue	-	-	100,000	100,000	-	-	-	100,000
General Revenues								
Other Income	16,628	-	-	16,628	-	-	-	16,628
Investment Income	402,574	66,238	124,830	593,642	295,764	587,631	571,702	2,048,739
Investment Unrealized Gain/Loss	(12,065)	(11,510)	(21,517)	(45,092)	(42,443)	(108,120)	(130,080)	(325,735)
Investment Income	414,639	77,748	146,347	638,734	338,207	695,751	701,782	2,374,474
Total General Revenues	419,202	66,238	124,830	610,270	295,764	587,631	571,702	2,065,367
Total Revenues	15,605,838	66,238	224,830	15,896,906	295,764	587,631	3,526,135	20,306,436
Expenditures								
Service Operations								
Water Expense	2,933,732	-	-	2,933,732	-	-	-	2,933,732
Wastewater Expense	1,188,933	-	-	1,188,933	-	-	-	1,188,933
Shared Operations Expense	1,147,790	-	-	1,147,790	-	-	-	1,147,790
SER Project Expense	86,650	-	-	86,650	-	-	-	86,650
Shared Admin Expense	2,709,734	3,434	5,676	2,718,844	11,214	20,861	53,512	2,804,431
Capital Outlay	-	-	3,253,827	3,253,827	-	3,478,613	-	6,732,440
Debt Service	-	-	-	-	4,296,294	-	-	4,296,294
Total Expenditures	8,066,839	3,434	3,259,503	11,329,776	4,307,508	3,499,474	53,512	19,190,270
Revenues Over (Under) Expenditures	7,538,999	62,804	(3,034,673)	4,567,130	(4,011,744)	(2,911,843)	3,472,623	1,116,166
Other Financing Sources (Uses)								
Transfers	(11,250,000)	-	2,500,000	(8,750,000)	7,233,727	2,500,000	(983,727)	-
Transfers Out	(11,250,000)	-	-	(11,250,000)	-	-	(983,727)	(12,233,727)
Transfers In	-	-	2,500,000	2,500,000	7,233,727	2,500,000	-	12,233,727
Total Other Financing Sources (Uses)	(11,250,000)	-	2,500,000	(8,750,000)	7,233,727	2,500,000	(983,727)	-
Excess (Deficiency) of Revenues & Other Financing Sources Over (Under) Expenditures & Other Financing Uses	(3,711,001)	62,804	(534,673)	(4,182,870)	3,221,983	(411,843)	2,488,896	1,116,166
Fund Balances—Beginning of Period	30,126,462	5,420,378	8,083,548	43,630,388	25,690,956	51,614,132	41,390,258	162,325,734
Fund Balances—End of Period	26,415,461	5,483,182	7,548,875	39,447,518	28,912,939	51,202,289	43,879,154	163,441,900

West Travis County Public Utility Agency

2025 March

Budget Variance Report-General Fund

	Year to Date				Annual	Total
	General Fund	Budget	Variance	Annual Budget	Remaining	Remaining %
Revenues						
Program Revenues						
Water Revenue	11,923,038	11,650,869	272,169	27,240,000	15,316,962	56%
Wastewater Revenue	2,649,255	2,617,424	31,831	5,395,000	2,745,745	51%
SER Project Revenue	614,343	618,500	(4,157)	1,909,000	1,294,657	68%
Total Program Revenues	15,186,636	14,886,793	299,843	34,544,000	19,357,364	56%
General Revenues						
Other Income	16,628	24,990	(8,362)	50,000	33,372	67%
Investment Income	402,574	374,850	27,724	750,000	347,426	46%
Total General Revenues	419,202	399,840	19,362	800,000	380,798	48%
Total Revenues	15,605,838	15,286,633	319,205	35,344,000	19,738,162	56%
Expenditures						
Service Operations						
Water Expense	2,933,732	2,819,788	(113,944)	5,750,230	2,816,498	49%
Wastewater Expense	1,188,933	1,084,666	(104,267)	1,930,826	741,893	38%
Shared Operations Expense	1,147,790	1,177,685	29,895	2,336,764	1,188,974	51%
SER Project Expense	86,650	92,463	5,813	185,000	98,350	53%
Shared Admin Expense	2,709,734	3,080,713	370,979	5,867,454	3,157,720	54%
Transfers	11,250,000	11,250,000	-	22,500,000	11,250,000	50%
Total Expenditures	19,316,839	19,505,315	188,476	38,570,274	19,253,435	50%
Revenues Over (Under) Expenditures	(3,711,001)	(4,218,682)	507,681	(3,226,274)	484,727	

ITEM D

MURFEE ENGINEERING COMPANY, INC.

Texas Registered Firm No. F-353
1101 Capital of Texas Hwy., South, Bldg., D
Austin, Texas 78746
(512) 327-9204

M E M O R A N D U M

DATE: April 10, 2025
TO: BOARD OF DIRECTORS – WEST TRAVIS COUNTY PUBLIC UTILITY AGENCY
FROM: George Murfee, P.E.
RE: Engineer's Report – April 2025
MEC File No.: 11051.174

Current Items

Wastewater Flow

The latest figure tracking wastewater flows is attached.

Raw and Treated Water Flows

Figures are attached. Trend is typical.

Water-System Wide

Uplands Water Treatment Plant Design

The plans have been submitted to the TCEQ and we are still within the 60-day review period. The site development permit has been resubmitted to the City to address completeness comments. We anticipate additional rounds of staff review comments in the coming months with approval coming in around May 2025. The design team is preparing the bidding documents for readiness to advertise the project with the understanding a NTP cannot be issued prior to approval of the CoBC site plan.

Alternative Water Supply

The report was presented to the board in February, waiting on final direction on next planning steps.

Water – SH71 System

Highway 620 Widening

MEC and WTCPUA staff have begun coordination with TxDOT consultants for the Highway 620 widening project. We are investigating what facilities may conflict with the proposed road construction plans and identifying which utilities are in the ROW and which are in WTCPUA Easements, including water, wastewater and effluent facilities along Highway 620 and within Highway 71 at the intersection with Highway 620. Coordination is ongoing with the road design engineer for TxDOT, and we received 90% plans in early December. We've been notified that TxDOT is renewing 3rd party consultant contracts. In the meantime, we continue to analyze potential conflicts.

1080 Transmission Main

Segment B plans were resubmitted for review to the City of Bee Cave and to TXDOT (Texas Department of Transportation) in January 2022. All outstanding comments have been addressed except for easement acquisition which continues to be a schedule delay for the project. We continue to coordinate among the staff, attorney, the surveyor, and land acquisition agents. The remaining easements are necessary to complete the water main along Hamilton Pool Road, up to the WBPS. The majority of the easements are anticipated to be acquired by May, with the exception of a few parcels at Lime Kiln Creek where a conflict has required an adjustment to the alignment, and new easement areas. The landowner has been contacted, the survey complete and the design is underway.

Austin Engineering has completed construction on the waterline between the Backyard and Twin Acres Drive on Hamilton Pool Road, and that portion of the line is now in service. Austin Engineering has demobilized until the remaining easements and construction ROWs have been obtained, and they have also begun installation of the pearl development 12" waterline change ordered into this contract in February 2025.

Hamilton Pool Road Transmission Main No. 2

No new updates. Masonwood development is working on securing easements and additional design survey for re-alignment design to Parcel 35 Following easement acquisition by the developer or the WTCPUA, MEC will modify the plans as required and will submit site development plans for review to the reviewing agencies. The line will need to be oversized to a 20" or 24".

Cross Country Transmission Main

Right of Entry (ROE) and Easement acquisition is underway. Preliminary Design is underway near the bore location across Barton Creek, along Silver Creek Road. Coordination with stakeholders in the Anarene and Lunaroya developments is underway.

Water – US290 System

Southwest Parkway Pump Station

The project was awarded to Payton Construction, Inc in 2024. Work has commenced on the site and continues to proceed until all equipment arrives for the pumps, electrical and controls. The current pay application includes delivery of the pumps and motors, and now we are awaiting the electrical equipment. Submittals and RFIs continue to be processed. Work with the Generator Installation project is being coordinated with the ongoing work for this project, which includes some additional scope of work change ordered into the Payton contract.

US 290 Parallel Transmission Main Design

Right of Entry (ROE) have been obtained for all easements, and the environmental work has been completed. We are responding to resident requests for site meetings for permanent and temporary easements and resident questions. Appraisals have been completed and offer letters delivered. We are continuing discussions with homeowners to acquire easements voluntarily. Currently, there are 9 easements left to finalize procurement of all segments. We will continue to analyze the existing easements and identify easement constraints that will require additional permanent or construction easements. Final SUE level B (field locations) and level A (field location including elevations) have been received and information is being incorporated into plan sets for conflict review.

- Segment 2 bid is on hold. Preliminary SUE level B has been completed and is being incorporated into the plans to check for utility conflicts. SUE level A is proceeding, and completion is expected within the next few weeks. Easement acquisition updates as of 4/8/25:
 - P13A - Rcv'd owner signed TCE and sent to PUA with funds request. Anticipated Possession Date: Mid-late April.
 - P14B - Rcv'd original signed TCE, ordered funds. Anticipated Possession Date: Mid-late April.
- Segment 3 | Preliminary SUE level B has been completed and is being incorporated into the plans to check for utility conflicts. SUE level A is proceeding, and completion is expected within the next few weeks. Submittal is being prepared for the County and the City. Easement acquisition continues by negotiation and condemnation.
- Segment 1 has a completed preliminary horizontal design. Vertical preliminary profile design is in progress. Alternative alignments are being analyzed to avoid easement acquisition from TNC. Condemnation actions are pending. Preliminary SUE level B has been completed and is being incorporated into the plans to check for utility conflicts. SUE level A has been completed. Easement acquisition continues by negotiation and condemnation.
- Segment 4 has completed preliminary horizontal and vertical design. Complete preliminary plan set creation complete. Internal review and comments. Permit submittal will follow. Preliminary SUE level B has been completed and has been incorporated into the plans to check for utility conflicts. SUE level A has been completed and has been incorporated into the plans to check for utility conflicts. Easement acquisition updates as of 4/8/25:
 - P36 - Possession & Use Agmt. signed. ED atty working on getting title cleared and funds delivered to Court.
 - P44 - Surveyor sent revised easement to Murfee who is looking at the drawing files. (Technically on parcels 47-49 now.) Anticipated Possession Date: Est late-April.

Design surveys have been completed for all segments. Subsurface Utility Engineering (SUE) level D (records research) has been completed for all. Field work for environmental constraints identification is complete and the final report has been drafted and ready for submittal for all segments.

Bear Creek Pass Waterline Relocation

MEC and WTCPUA staff continue coordinating plans and ROW modifications with the County design Team. We have received County roadway design plans and have developed a plan for the waterline

relocation. We have addressed comments from the WTCPUA staff and the county consultants. Project bids were opened on April 10th with the anticipation of bringing a recommendation for award to the April meeting.

1240 Conversion Waterline

Site development permits were received by Travis County and the City of Austin in July 2023. An alternative route between the Live Oaks Springs Subdivision and Highway 290 has been determined and easement exhibits necessary to further the acquisition planning are in process. Construction on the segment through the Live Oaks Springs subdivision to Derecho is proposed at this time to be conducted in phases. A site plan correction for the phased construction was approved in October by the City of Austin. The alternative alignment will continue to progress in the design and approval phase, and the construction of the original plan will consist of a phasing plan. We have provided CC Carlton a notice to proceed with phase II, and anticipate construction beginning in May.

Circle Drive Pump Station and Ground Storage Tank

The PUA has received a release from the CoA ETJ. Work on this project will now begin in accordance with County requirements. A revised site plan layout is being designed for submittal to Travis County as the lead agent on the project review.

12 Inch Waterline Extension Hwy 290

Project status meeting on 12/5 with MEC, WTCPUA, current parcel owner, and parcel purchaser revealed that parcel is under contract for future multi-family development. A verbal agreement reached with the buyer for easement in exchange for future SER. SER has been submitted. Alignment is finalized and coordination Tie-in location confirmed with LJA Engineers. ROE on an adjacent parcel with the existing PUE is secured. Additional TCE survey received. Preliminary WTCPUA plan comments received and addressed. Site development / construction plan set complete. Submittal for permitting anticipated.

1340 Elevated Storage Tank (Dripping Springs)

Geotech bores are complete, and MEC is awaiting the geotechnical report. The site plan is in progress and is being prepared for submittal to the City of Dripping Springs.

1420 Elevated Storage Tank (HPR)

Site development permit application was submitted to Travis County on March 14, 2025. Comments received from Environmental on April 7th are currently being addressed. The TCEQ Contributing Zone Plan (CZP) is currently under review. On March 18th, the Lake Travis Fire Rescue determined that no permit was required for the scope of work being performed. Geotech bores are complete, and MEC is awaiting the geotechnical report.

RM 1826 TXDOT 2025 Road Improvements Waterline Relocation

MEC and WTCPUA have begun receiving plans and researching water facilities near and in the FM 1826 ROW modifications with the County design Team. We have received County roadway design plans (30% complete set) and have attended the initial coordination meeting. Once an initial list of facilities with a potential for project conflicts are developed, a scope of design services will be provided.

Wastewater – 71 System

Lime Kiln Branch Wastewater Interceptor (To Lifetime Fitness)

MEC is researching historical files and prepared a proposal pending the Lifetime Fitness SER approval.

Bohls Wastewater Treatment Plant Expansion Design

MEC is finalizing the preliminary design report with updated concepts based on the calculated system peaking factor and input from operations received during a site visit on 4/2/2025. We are finalizing a scope amendment for the design and phasing changes and have completed the project permitting and design schedule while simultaneously proceeding with the design of two 0.5 MGD trains in a single phase.

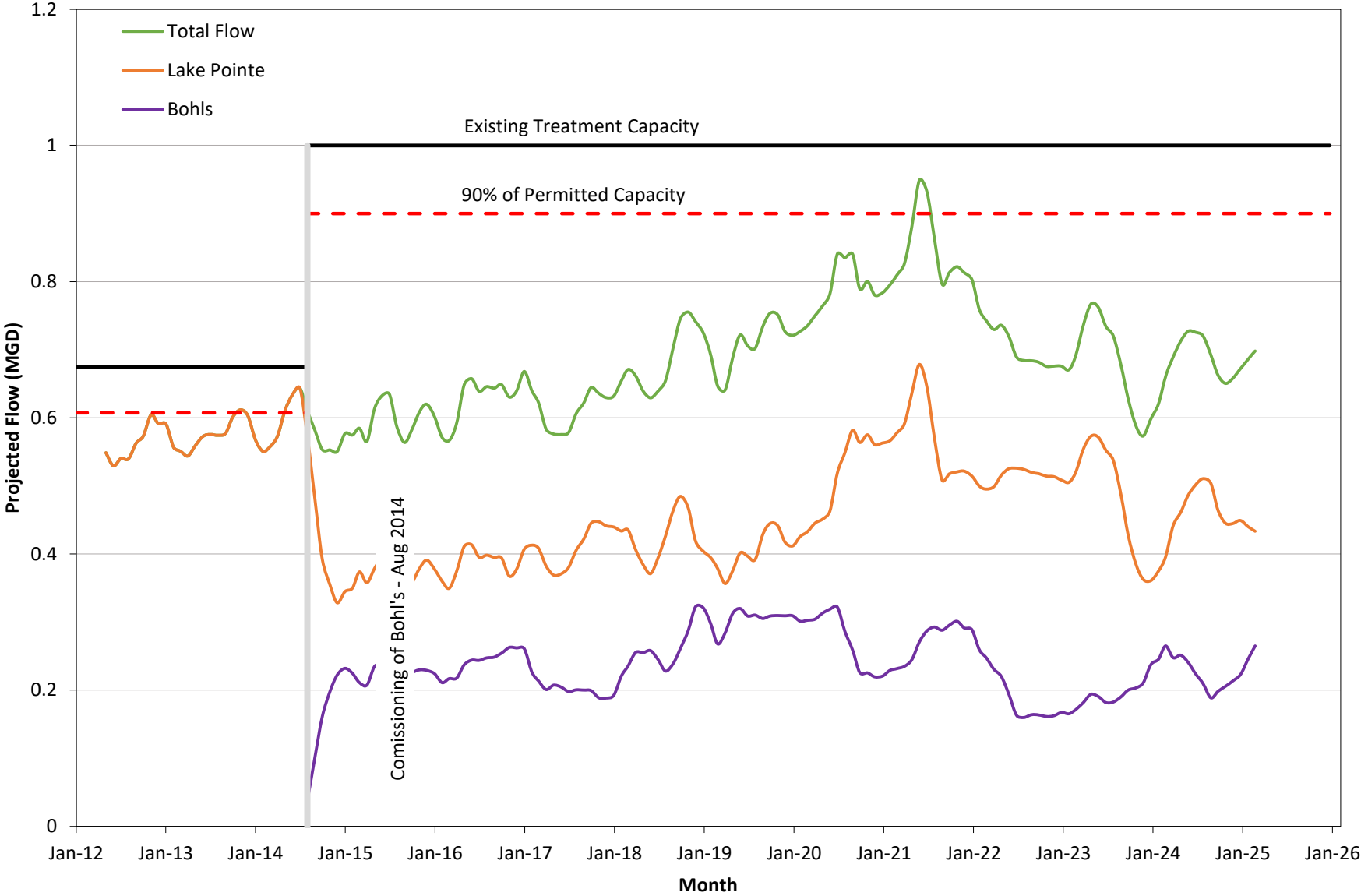
Lake Pointe Lift Station Rehab

The contractor has completed the liner installation and the lift station was returned to service. A final walkthrough was conducted in December to discuss the final steps in site restoration. MEC is coordinating with the contractor on the final project close out.

Wastewater Permit Renewal and Minor Amendment

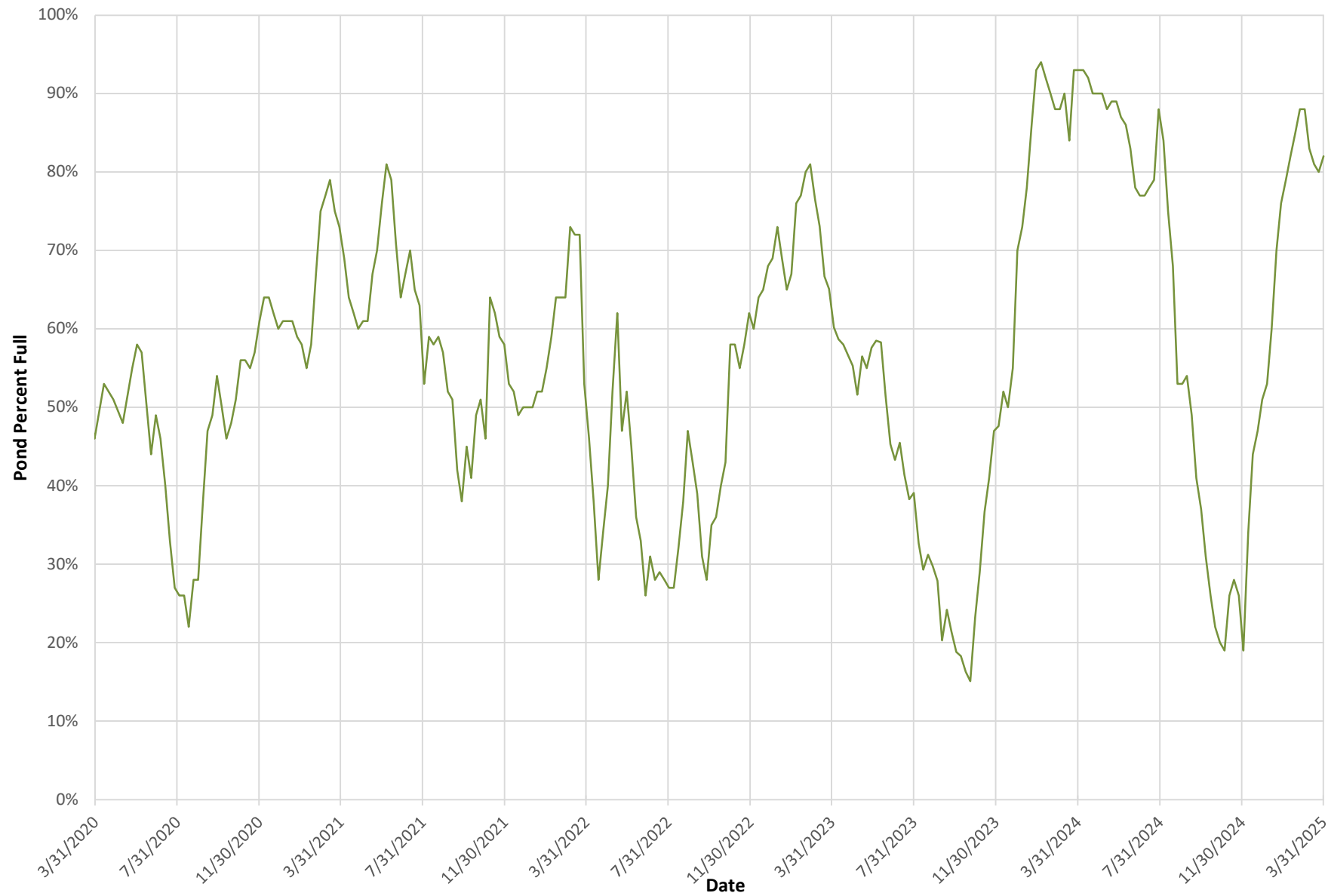
The technical permit writer has been reassigned and MEC is waiting for the draft permit to be published for review. The current permit expired November 13, 2024.

WTCPUA
Wastewater 3-Month Average Daily Flow

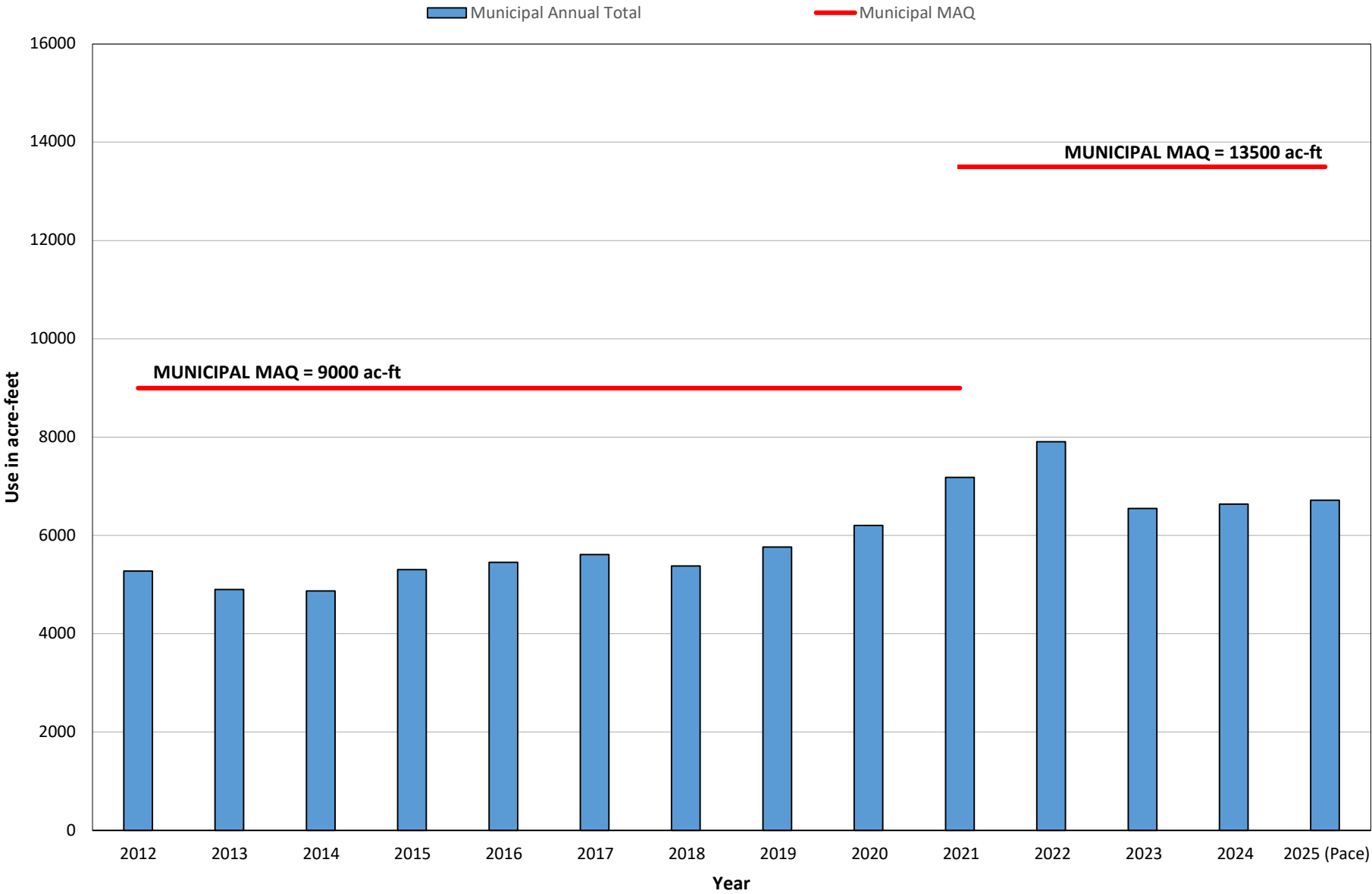


Murfee Engineering Co., Inc.
Texas Registered Firm No. F-353
1101 Capital of Texas Hwy., S., Bldg. D
Austin, Texas 78746

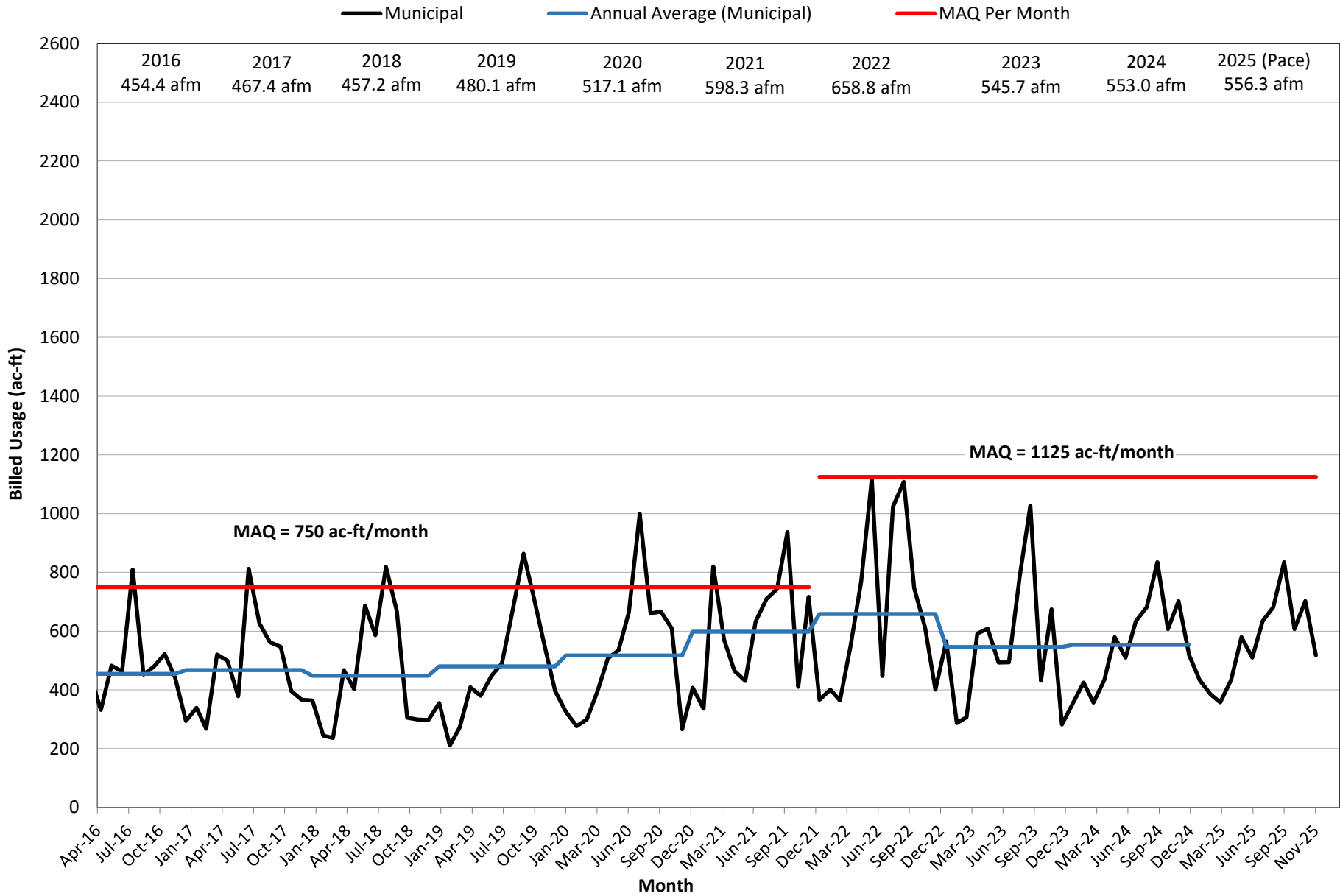
WTCPUA 5 Year Combined Effluent Pond Levels



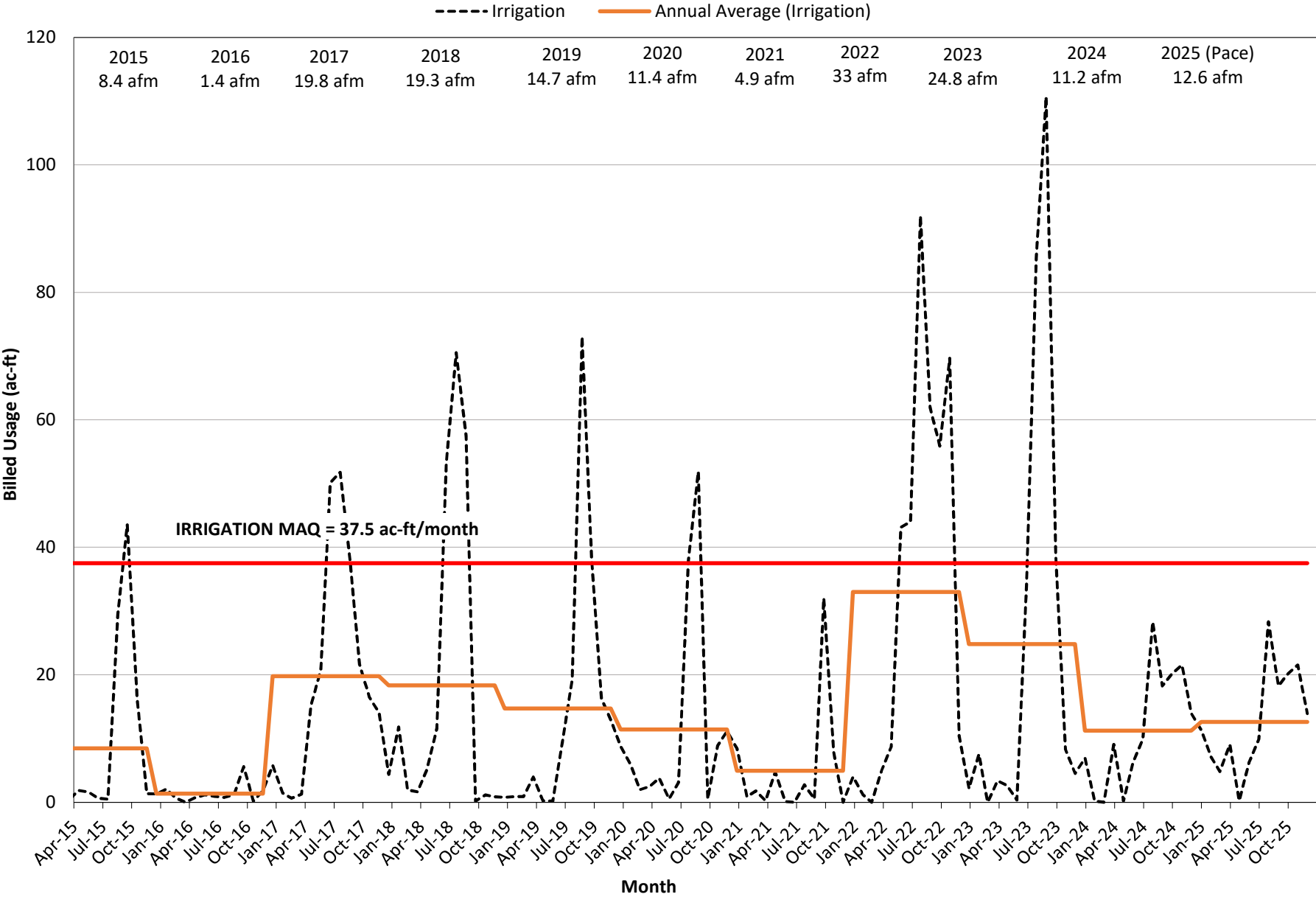
WTCPUA Annual Cumulative Municipal Raw Water Use



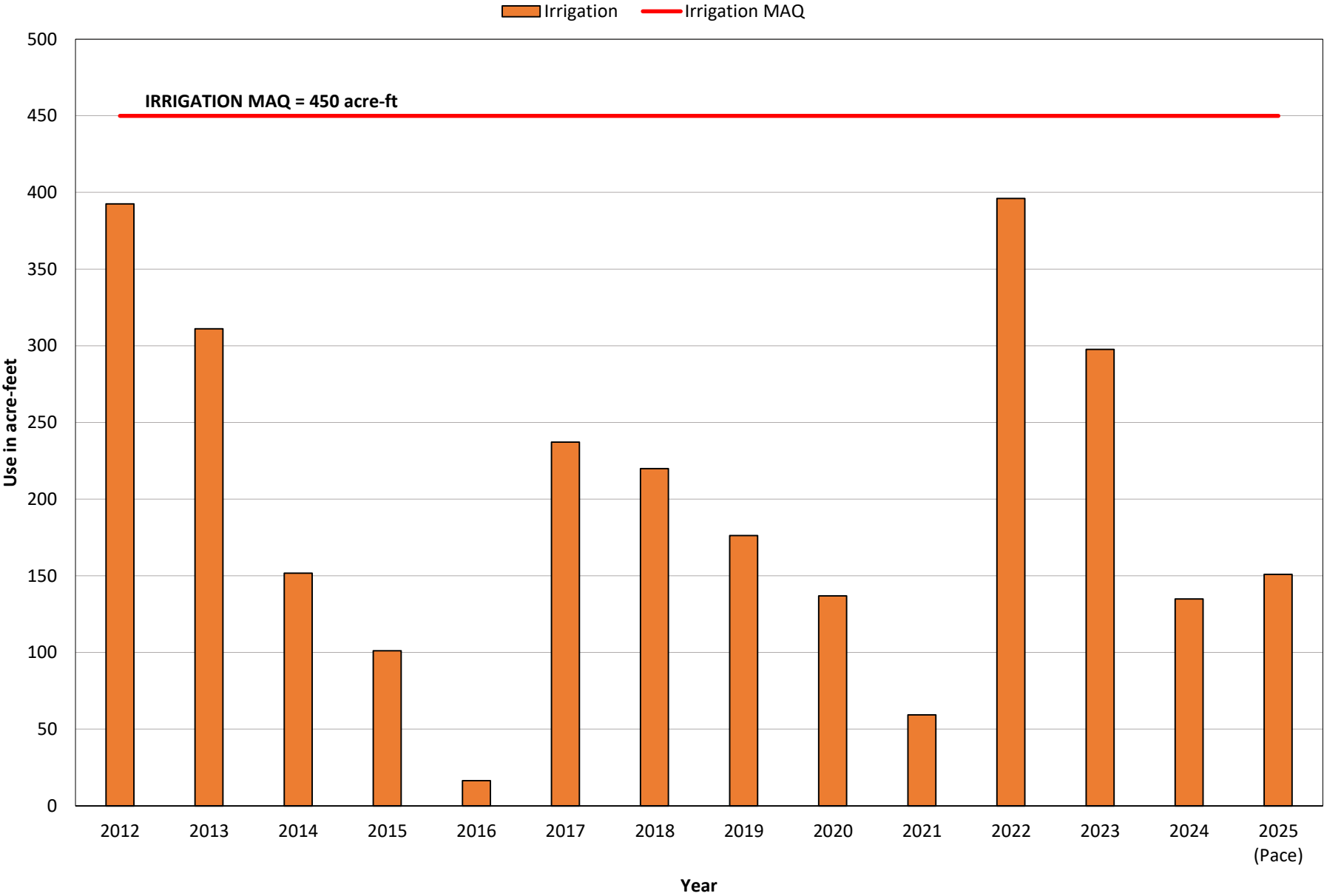
WTCPUA Municipal Raw Water Usage



WTCPUA Irrigation Raw Water Usage



WTCPUA Annual Cumulative Irrigation Raw Water Use



Murfee Engineering Company, Inc.
Texas Registered Firm No. F-353
1101 Capital of Texas Hwy., S.
Bldg. D, Ste. 110
Austin, Texas 78746

WTCPUA Uplands Water Treatment Plant Production Annual Production

